


Garage Packages

CANADA



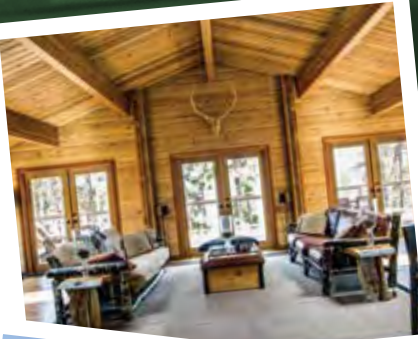
pan-abode®

THE ORIGINAL

A photograph of a two-story wooden cabin with a deck, nestled among tall evergreen trees on a steep, mossy hillside. The cabin is built on stilts. In the foreground, the dark, rippling water of a lake is visible. The scene is lush and green, suggesting a forest setting.

"Whether you choose
to build in the forest, in
the country, by the lake,
overlooking the ocean,
or near the city, no other
home brings you closer
to the heart of nature."

Why a Pan-Abode?



Whether you choose to build in the forest, in the country, by the lake, overlooking the ocean, or near the city, no other home brings you closer to the heart of nature.

The difference, quite simply, is Western Red Cedar - a unique variety of wood species common only to North America's Pacific Northwest.

Our indigenous peoples long ago recognized the sacredness of Red Cedar, which they referred to as the "Tree of Life" - as it sustained the mind, body and soul. It is the innate attributes of Western Red Cedar transformed into your Pan-Abode home that make all the difference. They combine to create a living environment that is warm and harmonious while providing dependability and endurance... It is the cedar that connects us to nature.

Flexible, Affordable, and Innovative

We have been designing your homes and building your memories since 1948... a long history that testifies to the enduring Pan-Abode Experience.

Pan-Abode's proven home packages and custom home design provide our customers with a building system that's both flexible and affordable.

If You Can Dream It, We Can Build It

Choose one of our standard floor plans - or use them as inspiration to customize a design that is unique for you.

Our standard home packages contain all materials needed to reach the "lock up" stage of construction - including the floor system, walls, doors, windows, ceiling, and roof system.

***"You won't find a home
that's easier to assemble."***

Building Original Memories Since 1948



In 1948, Danish master carpenter Aage Jensen had a dream to manufacture Cedar homes out of the abundance of Western Red Cedar that grew on the coasts of the Pacific Northwest. The name Pan-Abode was chosen in tribute to Pan, the Greek god of the wild who was worshipped in natural settings. It was in these fields, groves and wooded glens that everyman could build their retreat away from the pressures and demands of civilization. In the midst of nature's healing environs, one could re-group, re-connect and start over again.

With the aim of making the Pan-Abode dream affordable and buildable by all families, Mr. Jensen drew upon his knowledge of fine carpentry and his deep understanding of the properties of wood to devise the interlocking building system and "lock joint" corners now synonymous with the Pan-Abode name.

During the same 1948 time period, Mr. Jensen teamed up with the brilliant engineer and businessman, Albert "Doc" Steiner. The combined energies of these two remarkable visionaries translated into Pan-Abode homes becoming common features on practically every lakefront throughout North America - thus playing a vital role in the evolution of Cottage Culture on this continent. Additionally, Pan-Abodes were built as summer camps, mining camps, churches, fishing lodges, hotels, motels, restaurants, gas stations and banks, to name but a few of the many applications.

The partnership of Aage Jensen and "Doc" Steiner eventually expanded into a network of dealerships that provided Pan-Abode's unique product across Canada, United States and around the world - including Antarctica.

Today, Pan-Abode International continues to be Canadian-owned and proudly upholds the legacy founded by Aage Jensen and "Doc" Steiner. Our production facility features computerized milling equipment, custom engineered notching machinery, and specialized finishing technology. In our design and engineering offices, we use computerized drafting and log coding software that allows us to provide accurate, detailed drawings and estimates along with superb building site documentation for ease of assembly.

Pan-Abode is committed to staying true to the original vision of its founding partners to provide every family with enduring memories of their "cabin in the woods" experience. As in 1948, our homes continue to be constructed from 100% Western Red Cedar logs, the pristine wood species that has guaranteed comfort, quality and dependability throughout Pan-Abode's long history.

Garage Packages

SINGLE STOREY

Single Car Garage	285 square feet (26.44 m ²)
Two Car Garage	553 square feet (51.37 m ²)
Three Car Garage	807 square feet (74.98 m ²)

LOFT

Two Car with Loft	956 square feet (88.79 m ²)
Three Car with Loft	1,471 square feet (136.68 m ²)



Single Car Garage

This solid single car garage features Pan-Abode's classic 4" x 6" double tongue and groove Western Red Cedar log walls, a Cedar garage door, truss roof, a window on each side and back door. An excellent storage facility and/or very comfortable work shop.

Floor Plan:

Single Car Garage

Model No:

9784

Total Area:

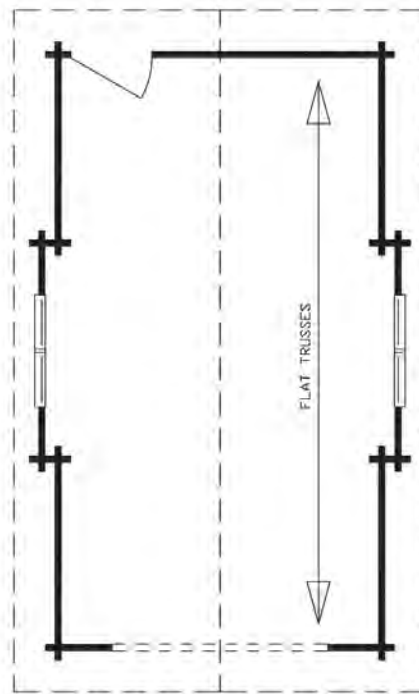
285 square feet (26.44 m²)

Width:

12'-0" (3.66 m)

Depth:

22'-0" (6.70 m)



MAIN FLOOR

285 square feet (26.44 m²)



Two Car Garage

Pan-Abode's classic two bay garage features our signature solid Western Red Cedar log construction and a truss roof overhead, providing the ideal storage space for vehicles, tools, and any other equipment requiring protection from the elements.

Floor Plan:

Two Car Garage

Model No:

9785

Total Area:

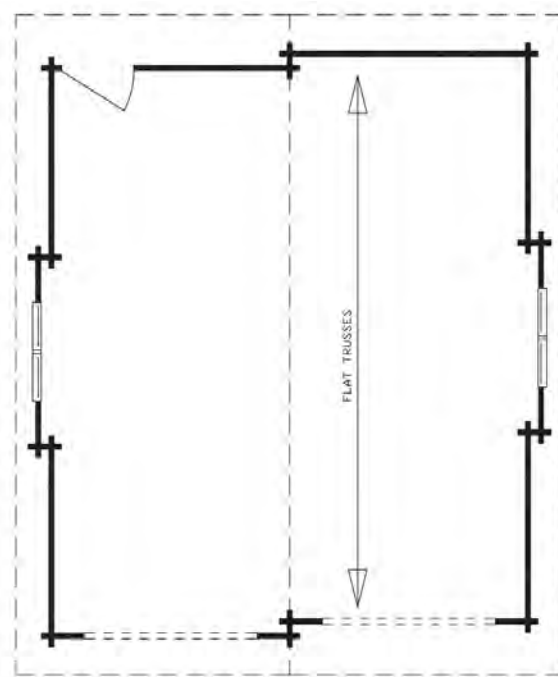
553 square feet (51.37 m²)

Width:

22'-0" (6.70 m)

Depth:

24'-0" (7.32 m)



MAIN FLOOR

553 square feet (51.34 m²)



Three Car Garage

Pan-Abode's three car garage is the ultimate shelter for your most valued toys. Constructed from solid Western Red Cedar, this plan provides plenty of storage and/or work space to please the aficionado collector or handy-man

Floor Plan:

Three Car Garage

Model No:

9786

Total Area:

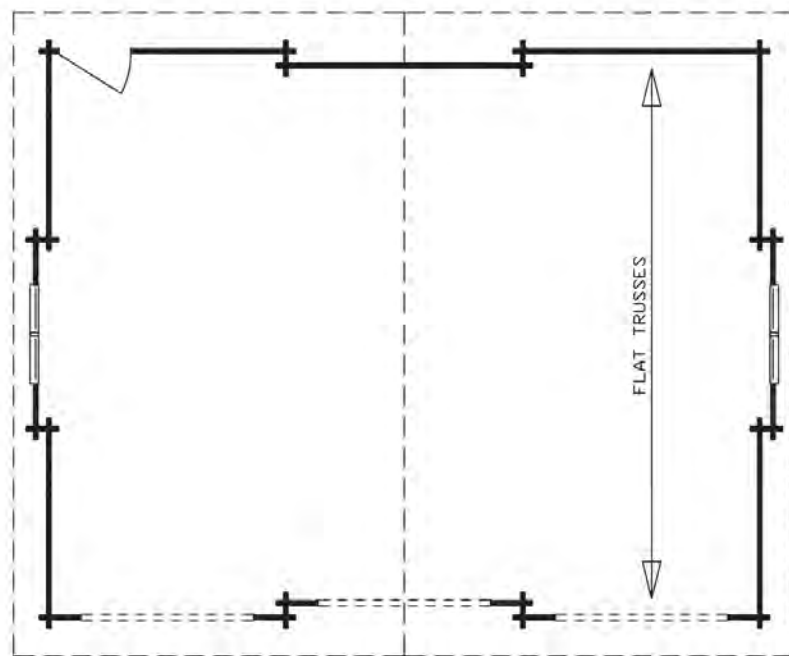
807 square feet (74.98 m²)

Width:

33'-0" (10.06 m)

Depth:

24'-0" (7.32 m)



MAIN FLOOR
807 square feet (74.98 m²)

TRUSS ROOF SYSTEM

Asphalt shingles (lifetime limited warranty),
Ridge cap and roof venting,
Ice & Water Shield underlayment,
½" Spruce plywood roof sheathing,
Engineered roof trusses sized for roof load
requirements up to 60 psf ground snow load,
Higher loads can be accommodated subject to additional charges,
Optional - R-28 fiberglass batt insulation and approved vapor barrier.
Optional - Scissor trusses
*Optional - 1"x 6" Tongue & Groove Western Red Cedar
V-joint paneling for ceiling.*

EXTERIOR DOORS

1-¾" Solid Western Red Cedar factory
weather-stripped with sill.
Complete with deadbolts and handles.

GABLE END WALLS

1"x 6" Tongue & Groove Pan-Abode
Western Red Cedar log profile siding
to face exterior gable ends,
1"x 3" pressure treated strapping,
½" Spruce plywood wall sheathing,
building wrap (TYPAR),
*Optional - R-20 fiberglass batt insulation and
approved vapor barrier.*
*Optional - 1"x 6" Tongue & Groove
Western Red Cedar log profile siding
for interior frame walls.*

LADDER FRAMING

2"x 4" Kiln Dried SPF
ladder framing materials
for roof overhangs.

FASCIA BOARDS

Western Red Cedar
fascia boards.

BARGE BOARDS

Western Red Cedar
barge boards.

SOFFIT

1"x 6" Tongue & Groove
Western Red Cedar V-joint paneling,
2"x 4" Kiln Dried SPF.

PAN-ABODE LOG WALLS (EXTERIOR)

Supplied in Select grade Western
Red Cedar 4"x 6" Double Tongue &
Groove Pan-Abode logs notched to
form Pan-Abode's patented
"lock joint" at all intersecting points.

WINDOWS

Loewen Douglas Fir casement/picture
windows, double-glazed with Low-E.
Roto-operators, screens and double
weather-stripping included.

NOTE

Package does NOT
include foundation site
erection, interior finish,
plumbing, heating,
electrical, paint, floor
coverings or cabinetry.

GARAGE DOOR

8'x7' Cedar garage door.

BASE TRIM

1"x 6" Tongue & Groove
Pan-Abode Western Red Cedar
log profile base trim.

GARAGE - RANCHER STYLE



Two Car Garage with Loft

Many creative options can be explored for this double car garage with living space above. Turn the loft area into a studio, guest suite, rental unit, laneway home or additional storage and work space. This classic design will last for decades.

Floor Plan:

Two Car Garage w/ Loft

Model No:

9787

Total Area:

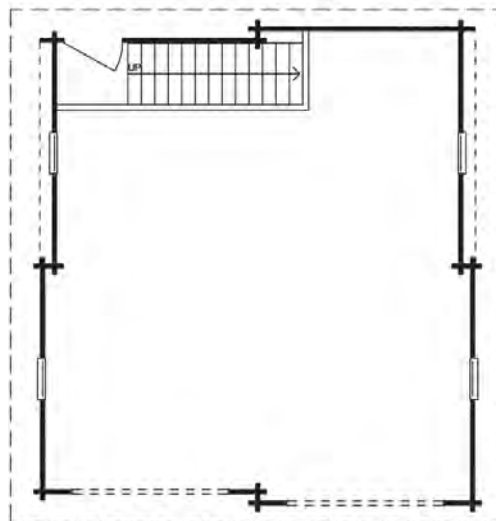
956 square feet (88.79 m²)

Width:

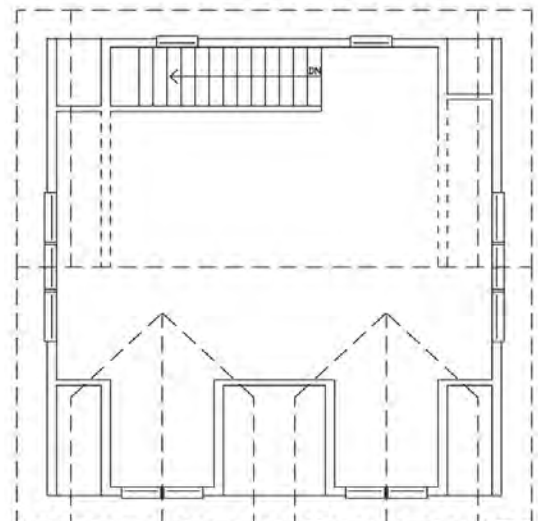
22'-0" (6.70 m)

Depth:

24'-0" (7.32 m)



MAIN FLOOR
541 square feet (50.27 m²)



LOFT
415 square feet (38.52 m²)



Three Car Garage with Loft

This traditional garage package provides an abundance of room and class. Let your imagination run wild with unique layout options on the second floor. Keep your most valuable possessions all under one roof - or create a living space for extra guests or rental income.

Floor Plan:

Three Car Garage w/ Loft

Model No:

9788

Total Area:

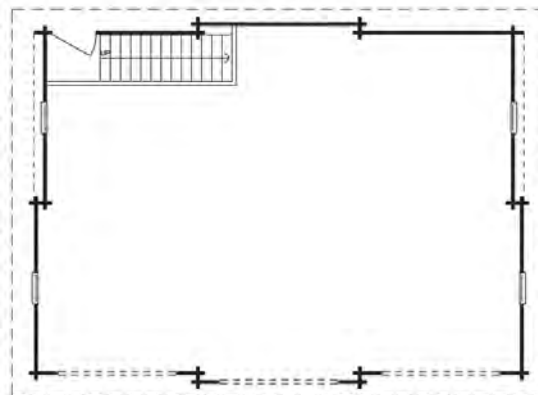
1,471 square feet (136.68 m²)

Width:

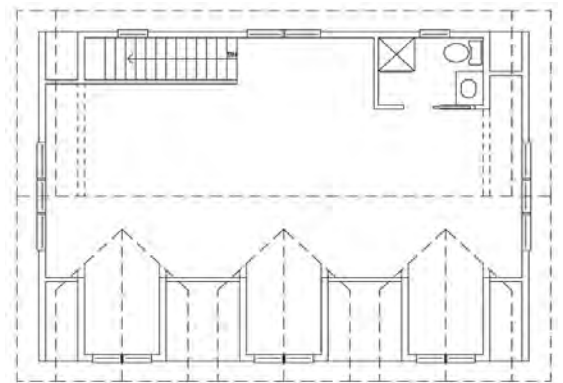
33'-0" (10.06 m)

Depth:

24'-0" (7.32 m)



MAIN FLOOR
809 square feet (75.17 m²)



LOFT
662 square feet (61.51 m²)

EXTERIOR FRAME WALL ABOVE LOG WALLS

1"x 6" Tongue & Groove Pan-Abode Western Red Cedar log profile siding for exterior, 1"x 3" pressure treated strapping, building wrap (TYPAR), ½" Spruce plywood wall sheathing, 2"x 6" Kiln Dried SPF studs and plates for framed wall construction, R-20 fiberglass batt insulation and approved vapor barrier.
Optional - 1"x 6" Tongue & Groove Western Red Cedar log profile siding for interior frame walls.

BARGE BOARDS

Western Red Cedar barge boards.

SOFFIT

1"x 6" Tongue & Groove Western Red Cedar V-joint paneling and continuous venting along eaves, 2"x 4" Kiln Dried SPF.

WINDOWS

Loewen Douglas Fir casement/picture windows, double-glazed with Low-E, Roto-operators, screens and double weather-stripping included.

UPPER FLOOR SYSTEM

Douglas Fir glue-laminated beams individually sized for floor load requirements, 2"x 8" to 2"x10" Kiln Dried SPF floor joists at 16" on center as required, ¾" Tongue & Groove Spruce plywood subfloor, *Optional - 1"x 6" Tongue & Groove Western Red Cedar V-joint paneling for ceiling.*

INTERIOR FRAME WALLS

2"x 4" Kiln Dried SPF framing studs and plates for interior frame walls as per plan.

FRAME WALL FINISH (OPTIONAL)

1"x 6" Tongue & Groove Pan-Abode Western Red Cedar log profile siding for interior frame walls.

LADDER FRAMING

2"x 4" Kiln Dried SPF ladder framing materials for roof overhangs.

VAULTED ROOF SYSTEM

Asphalt shingles (lifetime limited warranty), Ridge cap and roof venting, Ice & Water Shield underlayment, ½" Spruce plywood roof sheathing, 2"x 12" Kiln Dried SPF roof rafters at 24" on center to Building Code requirements and eave venting, R-28 fiberglass batt insulation and approved vapor barrier. Roof purlins (Douglas Fir glued-laminated beams).
Optional - 1"x 6" Tongue & Groove Western Red Cedar V-joint paneling for ceiling.

STAIRS

Stringers, treads and plywood for stair tread backing and adjustable bases supplied.
Handrail supplied by others.

FASCIA BOARDS

Western Red Cedar fascia boards.

PAN-ABODE LOG WALLS (EXTERIOR)

Supplied in Select grade Western Red Cedar 4"x 6" Double Tongue & Groove Pan-Abode logs notched to form Pan-Abode's patented "lock joint" at all intersecting points.

GARAGE DOOR

8'x7' Cedar garage door.

EXTERIOR DOORS

1-¾" Solid Western Red Cedar factory weather-stripped with sill. Complete with deadbolts and handles.

INTERIOR DOORS

1-¾" sliced Oak flush panel doors and hardware.

NOTE

Package does NOT include foundation site erection, interior finish, plumbing, heating, electrical, paint, floor coverings or cabinetry.

GARAGE - LOFT STYLE

Package Contents

● INCLUDED IN BASE PACKAGE

○ OPTIONAL ADDITION

N/A NOT APPLICABLE

ITEM	MATERIALS	GARAGE	GARAGE WITH LOFT
MAIN FLOOR			
FLOOR BEAMS	2"x 8" to 2"x10" Kiln Dried SPF for constructing joist support beams within perimeter wall foundation	N/A	N/A
FLOOR SYSTEM	2"x 4" treated sill plate and waterproof gasket	●	●
SUBFLOOR	5/8" Tongue & Groove Spruce plywood (underlay grade)	N/A	N/A
EXTERIOR WALLS	Supplied in Select grade Western Red Cedar 4"x 6" Double Tongue & Groove Pan-Abode logs notched to form Pan-Abode's patented "lock joint" at all intersecting points	●	●
INTERIOR WALLS (SOLID LOG)	Select grade Western Red Cedar 4"x 6" Double Tongue & Groove Pan-Abode logs as above	N/A	N/A
INTERIOR WALLS (FRAME)	2"x 4" Kiln Dried SPF framing studs and plates for interior frame walls as per plan	N/A	●
FRAME WALL FINISH	1"x 6" Tongue & Groove Pan-Abode Western Red Cedar log profile siding	N/A	○
UPPER FLOOR			
FLOOR BEAMS	Douglas Fir glued laminated beams individually sized for floor load requirements	N/A	●
FLOOR SYSTEM (2"x 6" CEDAR)	2"x 6" Tongue & Groove Western Red Cedar Select grade decking V-Jointed on face side. Selected lengths.	N/A	N/A
FLOOR SYSTEM (JOISTS)	2"x 8" to 2"x 10" Kiln Dried SPF floor joists at 16" on center as required	N/A	●
SUBFLOOR	5/8" Tongue & Groove Spruce plywood (underlay grade)	N/A	●
EXTERIOR WALLS	2"x 6" Kiln Dried SPF studs and plates for framed wall construction, 1/2" Spruce plywood wall sheathing, building wrap (TYPAR), and 1"x 6" Tongue & Groove Pan-Abode Western Red Cedar log profile siding for exterior R-20 batt insulation and approved vapor barrier	N/A	●
INTERIOR WALLS	2"x 4" Kiln Dried SPF framing studs and plates	N/A	●
FRAME WALL FINISH	1"x 6" Tongue & Groove Pan-Abode Western Red Cedar log profile siding	N/A	○
STAIRS	Stringers, treads and plywood for stair tread backing and adjustable bases. Handrail supplied by others.	N/A	●

Package Contents

● INCLUDED IN BASE PACKAGE

○ OPTIONAL ADDITION

N/A NOT APPLICABLE

ITEM	MATERIALS	GARAGE	GARAGE WITH LOFT
CEILING AND ROOF			
PURLINS	Douglas Fir glued laminated beams individually sized for roof load requirements	N/A	●
CEILING/SOFFIT FINISH (2"x 6" CEDAR)	2"x 6" Tongue & Groove Western Red Cedar Select grade decking V-Jointed on face side (Selected lengths)	N/A	N/A
CEILING FINISH (1"x 6" V-JOINT)	1"x 6" Tongue & Groove Western Red Cedar V-Joint paneling	○	○
SOFFIT (1"x 6" V-JOINT)	1"x 6" Tongue & Groove Western Red Cedar V-joint paneling and continuous venting along eaves. 2"x 4" Kiln Dried SPF for soffit and ladder framing.	●	●
TRUSSES	Sized for roof load requirements up to 60 psf ground snow load	●	N/A
FRAMED GABLES	1/2" Spruce plywood wall sheathing, building wrap (TYPAR) and 1"x 6" Tongue & Groove Pan-Abode Western Red Cedar log profile siding to face exterior gable ends. 2"x 4" Kiln Dried SPF ladder framing materials for roof overhangs.	●	N/A
ROOF SYSTEM	2"x 12" Kiln Dried SPF roof rafters at 24" on center to Building Code requirements and eave venting. 1/2" Spruce plywood roof sheathing and H-Clips.	N/A	●
ROOF INSULATION	R-28 batts and approved vapor barrier Optional upgrade to R-40 insulation	N/A	●
ROOFING	Asphalt shingles (25 year warranty), ridge cap and roof venting	●	●
DOORS	Complete with hardware, pre-hung in frames.		
EXTERIOR DOORS	1 ¾" Solid Western Red Cedar; factory weather-stripped with sill. Complete with deadbolts and handles.	●	●
INTERIOR DOORS	1 ¾" sliced Oak flush panel doors and hardware	N/A	●
BI-FOLD DOORS	1 ¾" sliced Oak flush panel doors and hardware	N/A	N/A
SLIDING DOORS	Premium Douglas Fir sliding doors with sealed safety glazing, screens, weather-stripped and high security locking system	N/A	N/A
FRENCH DOORS	1 ¾" Western Red Cedar double tempered low-E argon sealed French doors. Factory weather-stripped with sill.	N/A	N/A
GARAGE DOORS	Western Red Cedar panels with Douglas Fir rails weather-stripped with tracks and hardware	●	●

Package Contents

● INCLUDED IN BASE PACKAGE

○ OPTIONAL ADDITION

N/A NOT APPLICABLE

ITEM	MATERIALS	GARAGE	GARAGE WITH LOFT
WINDOWS			
WOOD WINDOWS	Premium Douglas Fir casement/picture (per plan) with sealed glazing. Roto-operators, screens and double weather-stripping included.	●	●
VINYL WINDOWS	Quality double-glazed vinyl windows with hardware and screens	○	○
OTHER			
INTERIOR TRIM	Casing to complete installation of window and door frames. Western Red Cedar quarter round for finishing as required	●	●
EXTERIOR TRIM	Western Red Cedar base trim, fascia/barge boards and hold down rods	●	●
LOG HOME TAPE	Expanding acrylic open-cell log tape for sealing between tongue and groove of exterior logs 1/8" x 1/2" x 75' rolls	●	●
CAULKING	Clear acrylic caulking and caulking gun 300 mL tubes as required	●	●
CORNER GASKETS	3 1/8" x 3 1/8" expanding acrylic open-cell foam pads for sealing interlocking log corners	●	●
NAILS	All required common, finishing and roofing nails	●	●
PACKING	Packing supplied around windows and exterior doors to prevent air infiltration	●	●
FLASHING	Flashing for heads of windows and doors in gable walls	●	●
TOOLS	Nylon hammer block, log lifter and 5 meter (16') tape measure	●	●
PLANS AND DOCUMENTATION	Complete blueprints, log coding, material list and a comprehensive Construction Manual supplied with every building	●	●

Materials for Garages supplied in select lengths to be cut on site.
Specifications subject to change without notice.

