

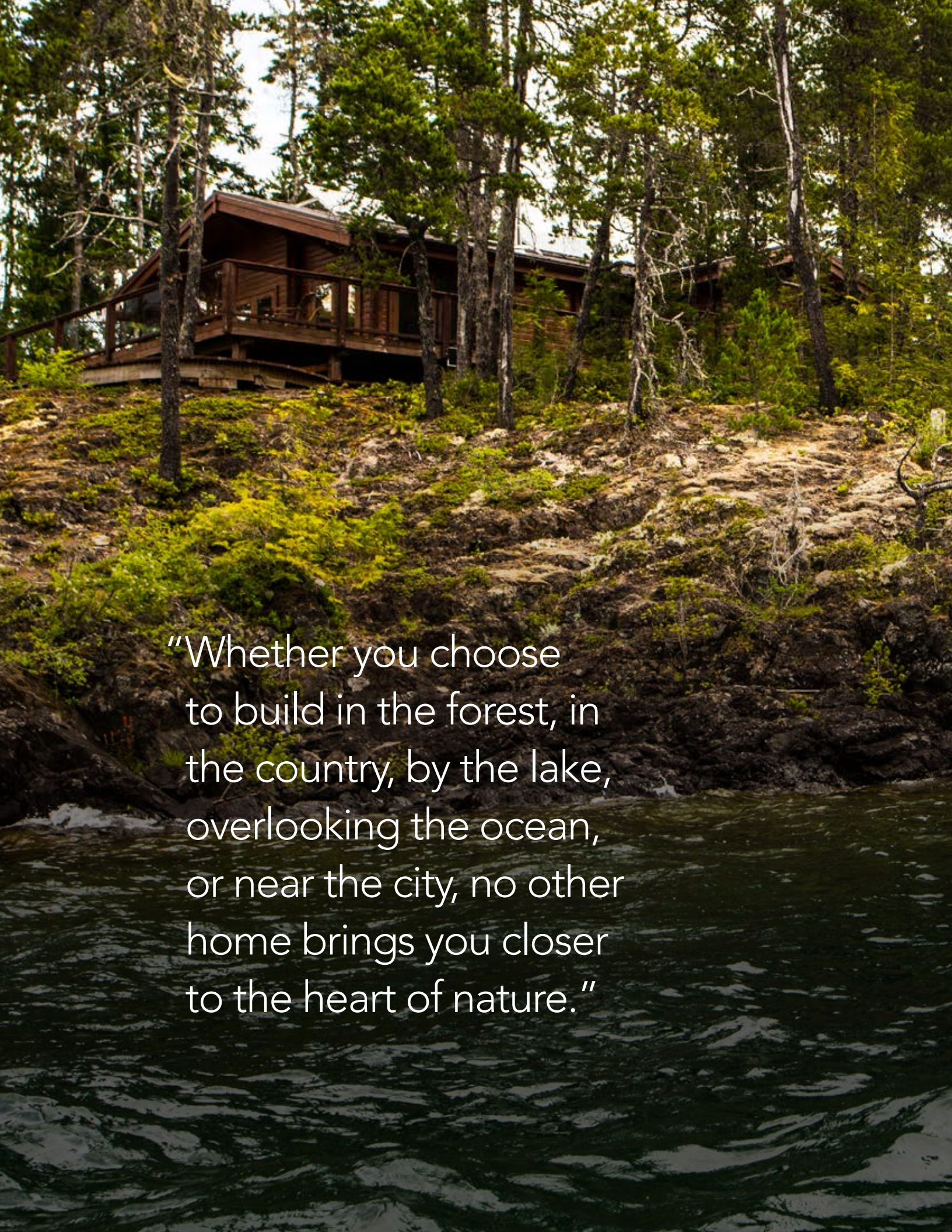
# Accessory Buildings

SAUNAS



 **pan-abode®**  
THE ORIGINAL



A photograph of a two-story wooden cabin with a balcony, nestled among tall evergreen trees on a steep, mossy hillside. The hillside is covered in green moss and small plants. In the foreground, the dark, rippling water of a lake is visible. The cabin has a dark roof and wooden siding, and its balcony is enclosed with a wooden railing. The trees are tall and thin, with dense green foliage. The overall scene is peaceful and natural.

"Whether you choose  
to build in the forest, in  
the country, by the lake,  
overlooking the ocean,  
or near the city, no other  
home brings you closer  
to the heart of nature."



# Building Original Memories Since 1948



In 1948, Danish master carpenter Aage Jensen had a dream to manufacture Cedar homes out of the abundance of Western Red Cedar that grew on the coasts of the Pacific Northwest. The name Pan-Abode was chosen in tribute to Pan, the Greek god of the wild who was worshipped in natural settings. It was in these fields, groves and wooded glens that everyman could build their retreat away from the pressures and demands of civilization. In the midst of nature's healing environs, one could re-group, re-connect and start over again.

With the aim of making the Pan-Abode dream affordable and buildable by all families, Mr. Jensen drew upon his knowledge of fine carpentry and his deep understanding of the properties of wood to devise the interlocking building system and "lock joint" corners now synonymous with the Pan-Abode name.

During the same 1948 time period, Mr. Jensen teamed up with the brilliant engineer and businessman, Albert "Doc" Steiner. The combined energies of these two remarkable visionaries translated into Pan-Abode homes becoming common features on practically every lakefront throughout North America - thus playing a vital role in the evolution of Cottage Culture on this continent. Additionally, Pan-Abodes were built as summer camps, mining camps, churches, fishing lodges, hotels, motels, restaurants, gas stations and banks, to name but a few of the many applications.

The partnership of Aage Jensen and "Doc" Steiner eventually expanded into a network of dealerships that provided Pan-Abode's unique product across Canada, United States and around the world - including Antarctica.

Today, Pan-Abode International continues to be Canadian-owned and proudly upholds the legacy founded by Aage Jensen and "Doc" Steiner. Our production facility features computerized milling equipment, custom engineered notching machinery, and specialized finishing technology. In our design and engineering offices, we use computerized drafting and log coding software that allows us to provide accurate, detailed drawings and estimates along with superb building site documentation for ease of assembly.

Pan-Abode is committed to staying true to the original vision of its founding partners to provide every family with enduring memories of their "cabin in the woods" experience. As in 1948, our homes continue to be constructed from 100% Western Red Cedar logs, the pristine wood species that has guaranteed comfort, quality and dependability throughout Pan-Abode's long history.



# Sauna Packages

## SINGLE ROOM

2-Person Sauna	35 square feet (26.48 m <sup>2</sup> )
2-3-Person Sauna	48 square feet (51.37 m <sup>2</sup> )
5-6-Person Sauna	96 square feet (74.97 m <sup>2</sup> )
5-6-Person Sauna	98 square feet (90.50 m <sup>2</sup> )

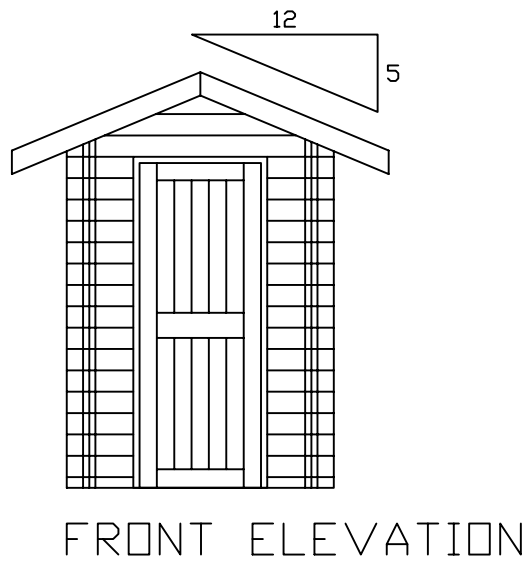
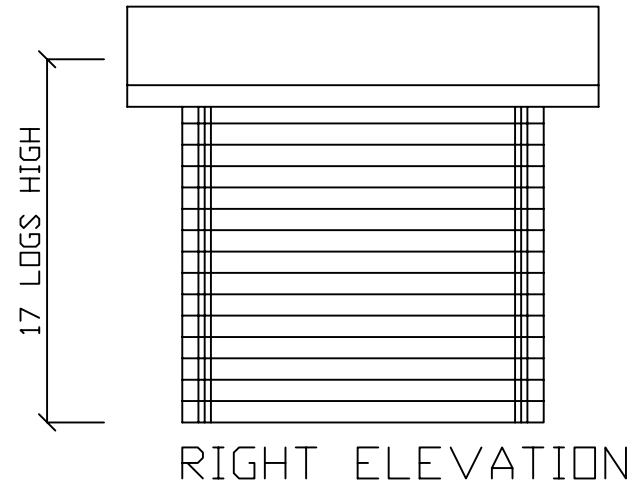
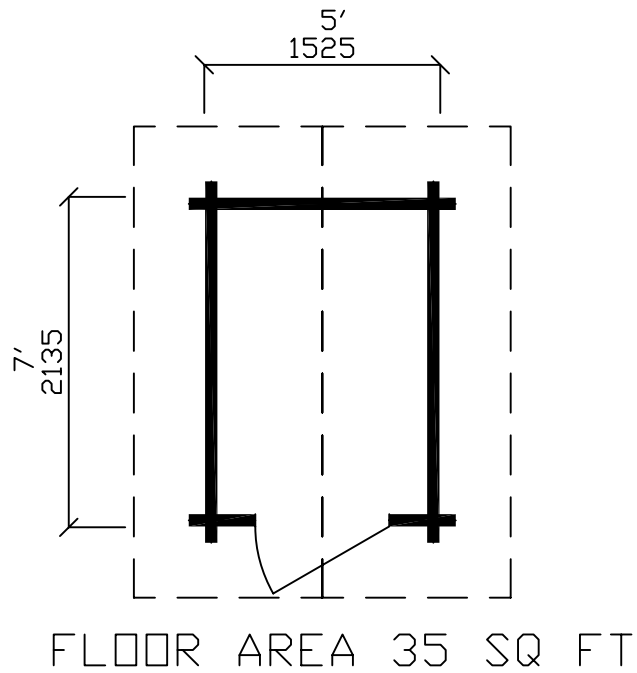
## DOUBLE ROOM


3-4-Person Sauna	96 square feet (137.50 m <sup>2</sup> )
------------------	---

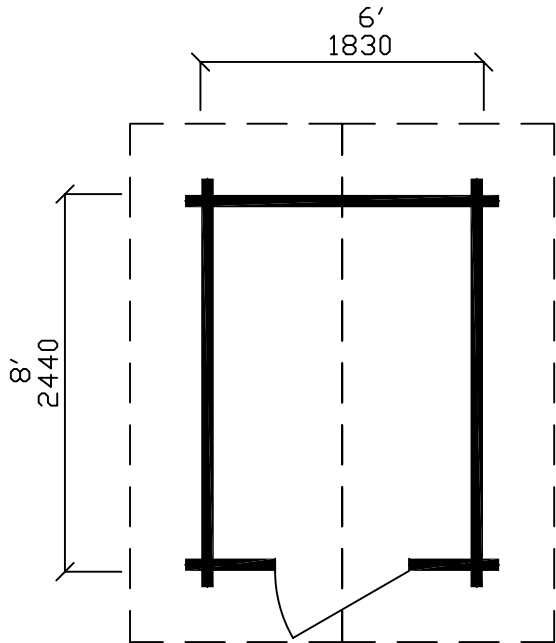


### SAUNA PACKAGE

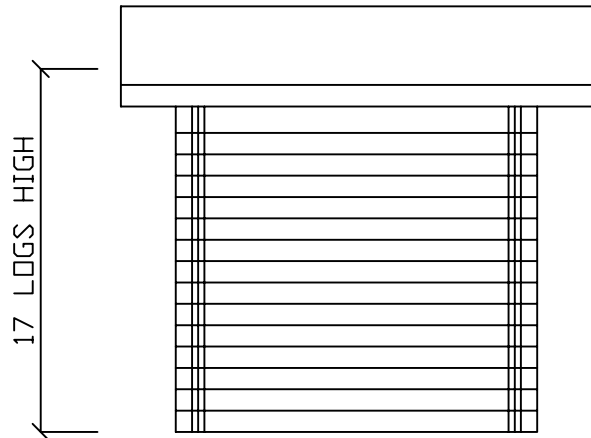
<b>BEAMS:</b>	2" x 8" for laminating joist support beams
<b>FLOOR SYSTEM:</b>	2" x 8" floor joists.
<b>SUBFLOOR:</b>	5/8" T&G plywood (underlay grade).
<b>WALLS &amp; PARTITIONS:</b>	Supplied in Select Western Red Cedar. 4" double tongue and groove Pan-Abode logs. (Notched to form Pan-Abode's patented "LOCK JOINT" at all intersecting points).
<b>GLULAMINATED PURLINS:</b>	Manufactured by CSA approved factory. Individually sized for roof load requirements. (If ground snow load exceeds 60 psf, larger glulamined beams may be required at additional cost).
<b>ROOFBOARDS:</b>	2" x 6" Cedar select decking. V-jointed on face side. Selected lengths.
<b>ROOFING:</b>	Asphalt shingles, ridge cap and roof vents.
<b>ROOF INSULATION:</b>	Optional
<b>DOORS:</b>	Complete with hardware, pre-hung in frames. Exterior doors factory weather-stripped with sill. Exterior Doors: Entry - 1 3/4" cedar as per blueprints. Complete with handle. Interior Doors: Solid cedar door with sauna hardware.
<b>INTERIOR TRIM:</b>	Pre-mitred casing to complete installation of door frames. Quarter round for finishing all joints between roof and logs.
<b>EXTERIOR TRIM:</b>	Cedar base trim, barge boards and fascia boards.
<b>MISCELLANEOUS:</b>	All required common, finishing and roofing nails. Packing for use around exterior door. Flashing for heads of door in gable walls. Complete blueprints, log coding, material list, nylon hammer block, 5m (16') tape measure, and Construction Manual.



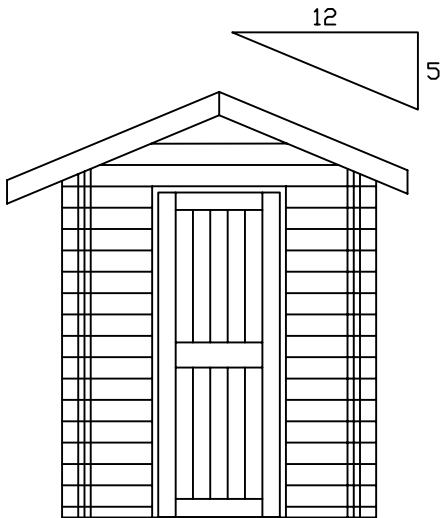
 <b>pan-abode</b> international ltd. 10880 DYKE ROAD, SURREY, BC CANADA V3V 7P4 tel (604)582-8295 fax (604)582-9053		
Name: SAUNA #1		
PLAN NO.:	FLR AREA:	
SCALE:		DRAWN BY:




FLOOR AREA 48 SQ FT

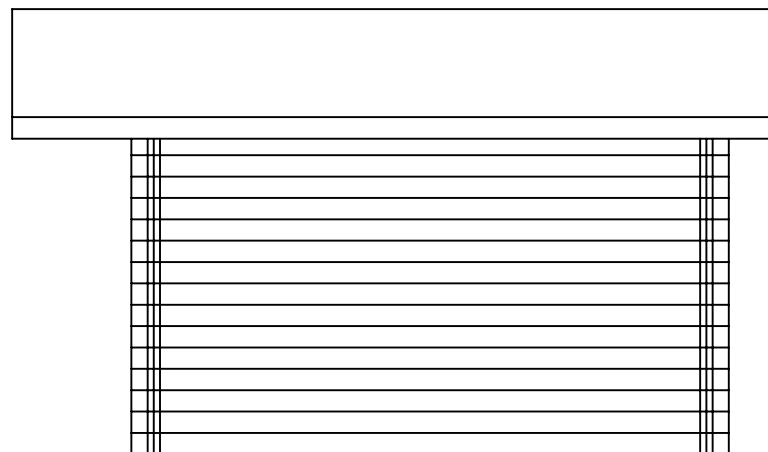
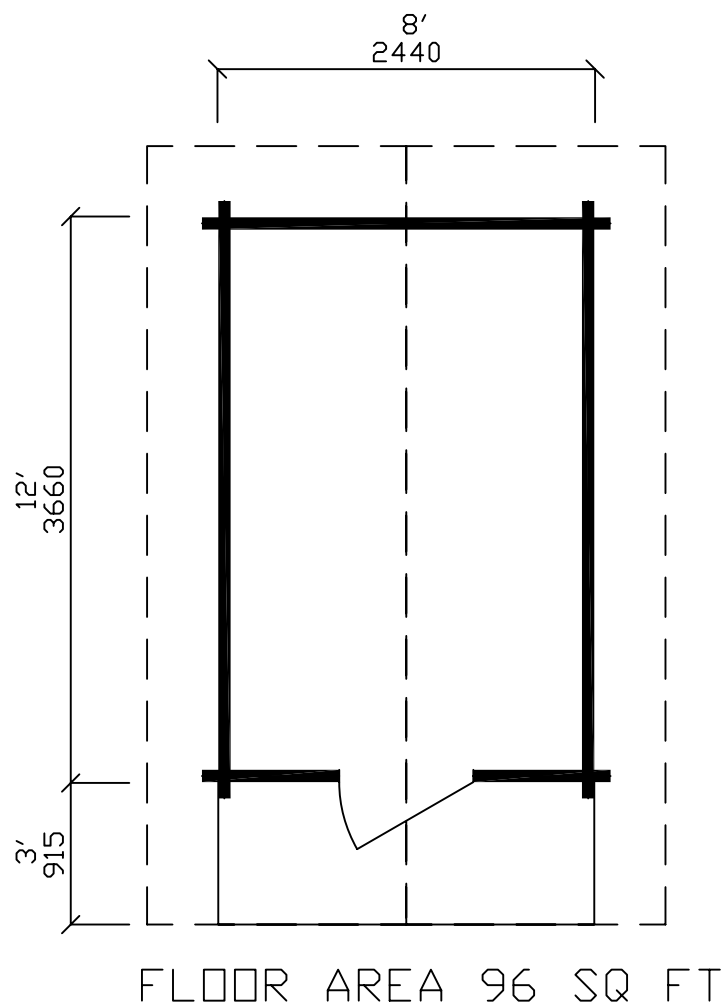


RIGHT ELEVATION

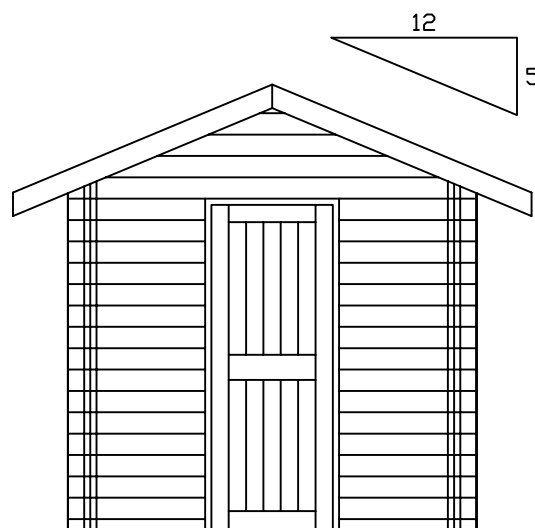


FRONT ELEVATION


 <b>pan-abode</b> international ltd. 10880 DYKE ROAD, SURREY, BC CANADA V3V 7P4 tel (604)582-8295 fax (604)582-9053		
Name: SAUNA #2		
PLAN NO.:	FLR AREA:	
SCALE:		DRAWN BY:



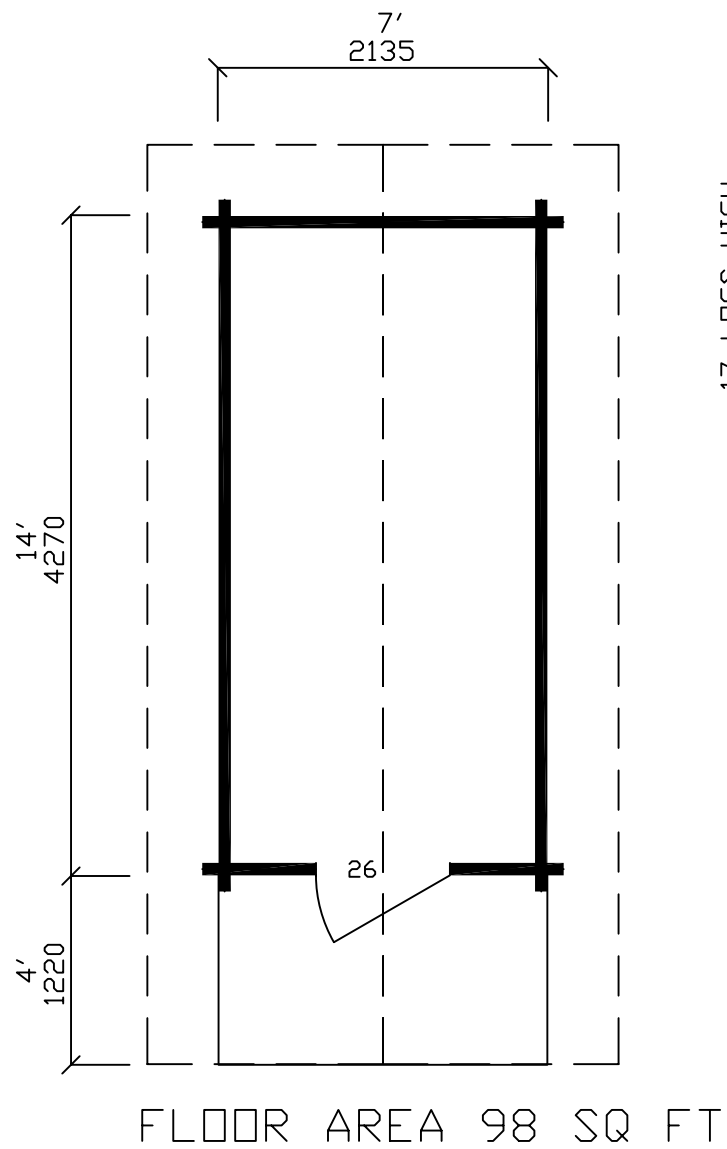
RIGHT ELEVATION



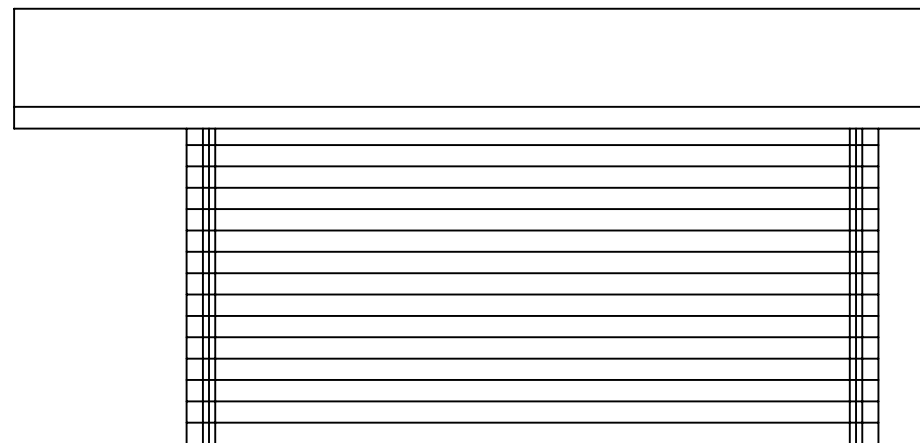
FRONT ELEVATION

 <b>pan-abode</b> international ltd. 10880 DYKE ROAD, SURREY, BC CANADA V3V 7P4 tel (604)582-8295 fax (604)582-9053		
Name: SAUNA #3		
PLAN NO.:	FLR AREA:	
SCALE:		DRAWN BY:

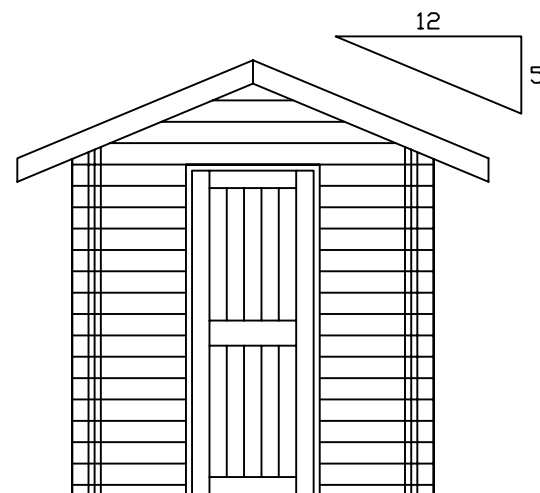





17 LOGS HIGH

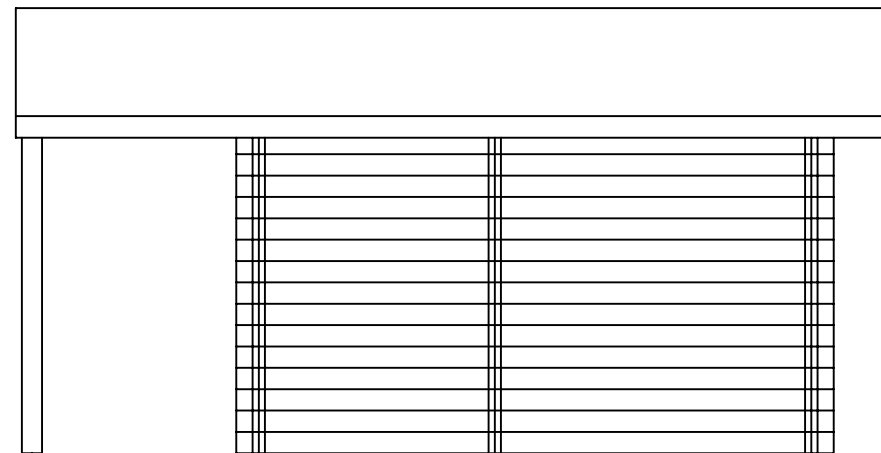
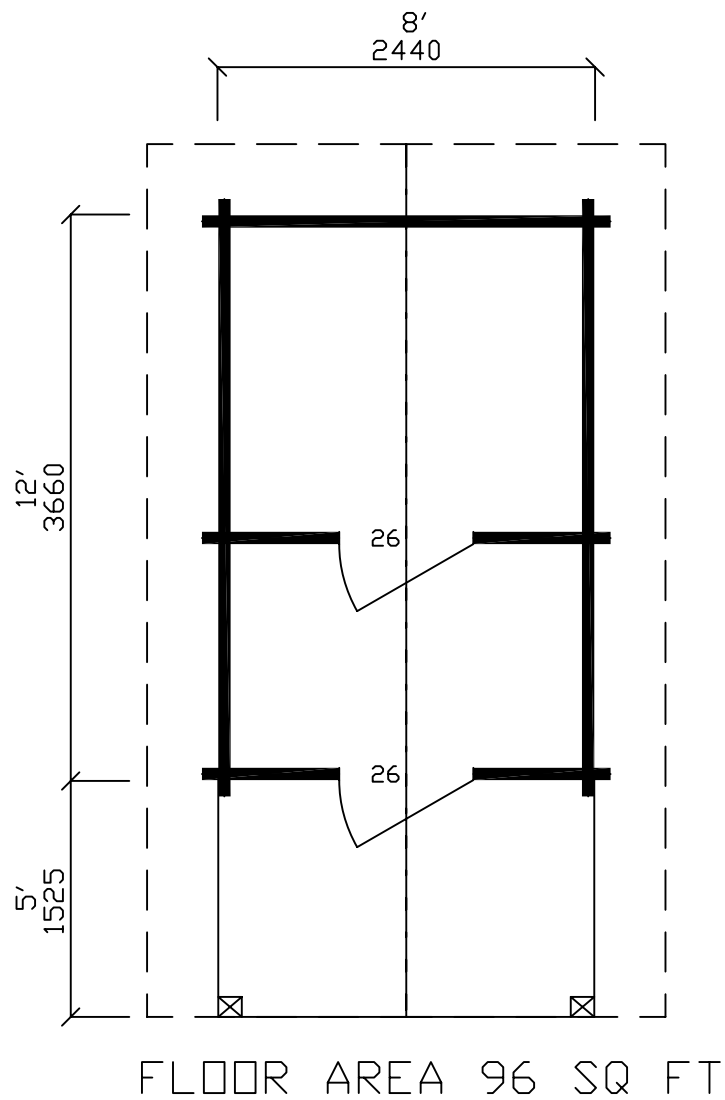


RIGHT ELEVATION

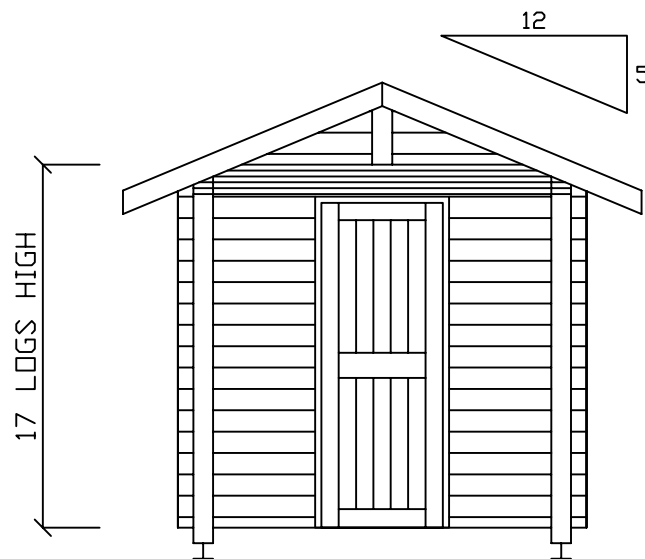


FRONT ELEVATION


 <b>pan-abode</b> international ltd. 10880 DYKE ROAD, SURREY, BC CANADA V3V 7P4 tel (604)582-8295 fax (604)582-9053		
Name: SAUNA #4		
PLAN NO.:	FLR AREA:	
SCALE:		DRAWN BY:



RIGHT ELEVATION



FRONT ELEVATION

 <b>pan-abode</b> international ltd. 10880 DYKE ROAD, SURREY, BC CANADA V3V 7P4 tel (604)582-8295 fax (604)582-9053		
Name: SAUNA #5		
PLAN NO.:	FLR AREA:	
SCALE:		DRAWN BY:







