



Shuswap

This highly functional floor plan leaves no wasted space. The Shuswap features two loft areas, a large vaulted Great Room and a spacious Master Bedroom with an adjoining bathroom. Relax with the family in your getaway cottage - ideal for any location.

Floor Plan:

Shuswap

Model No:

8865

Total Area:

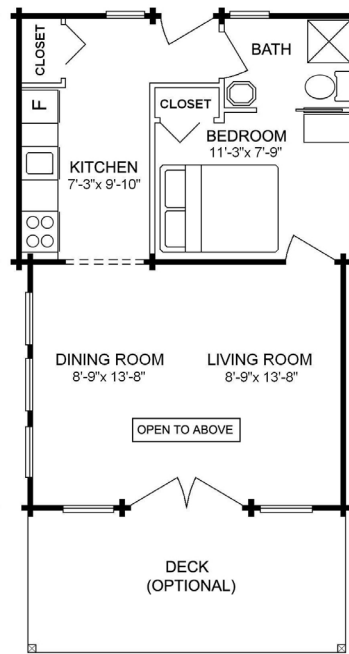
940 square feet (87.36 m²)

Width:

19'-4" (5.90 m)

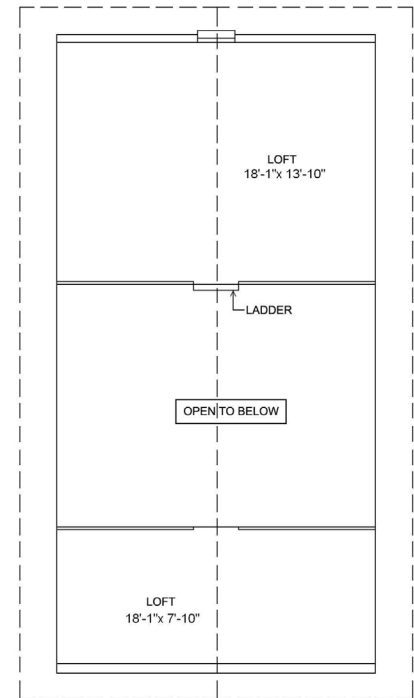
Depth:

36'-4" (11.07 m)



MAIN FLOOR

531 square feet (49.29 m²)



LOFT

409 square feet (38.07 m²)